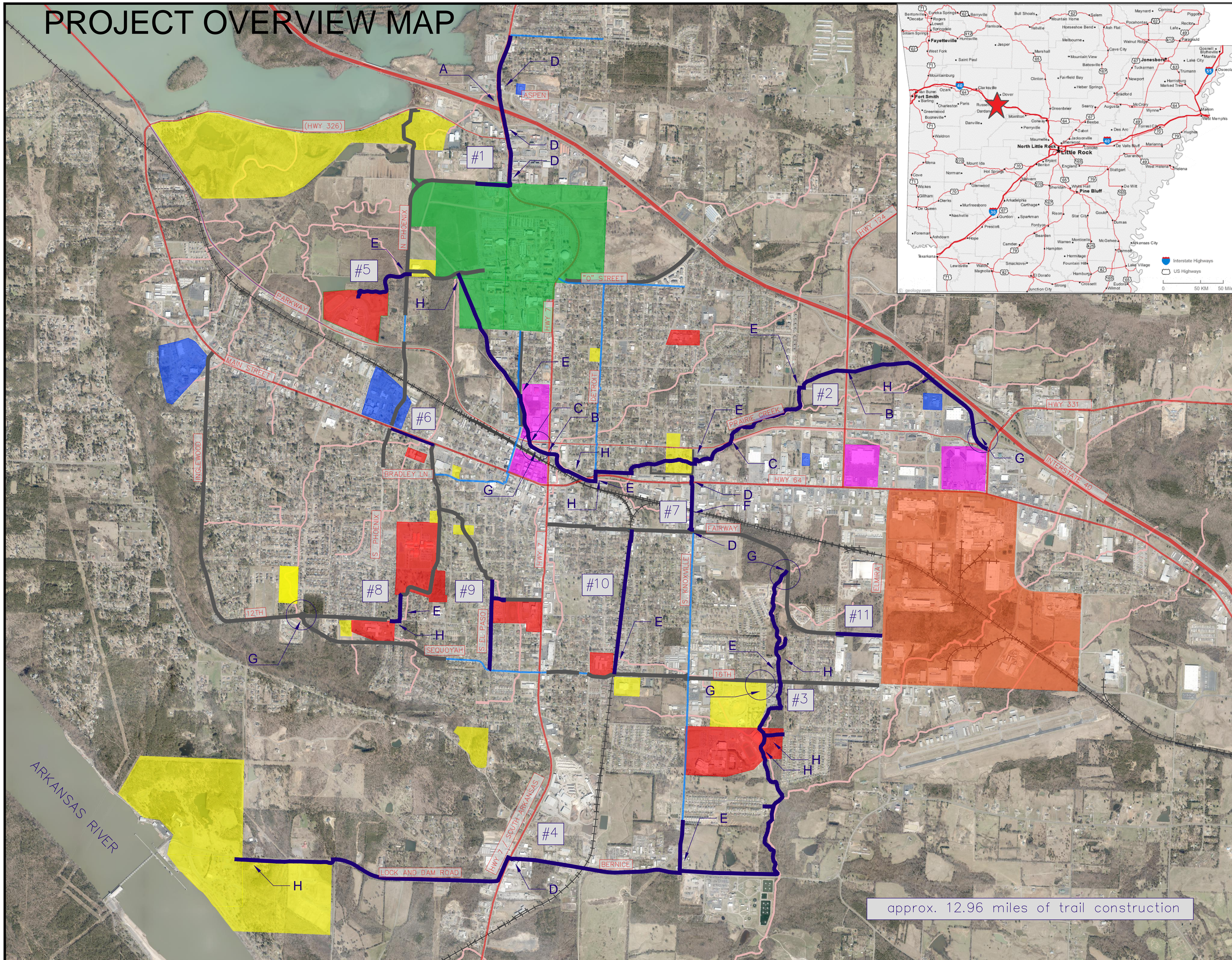


PROJECT OVERVIEW MAP



Russellville
ARKANSAS
 Public Works Department
 220 North Knoxville Avenue
 Russellville, AR 72801

- Legend**
- 1 Interstate Pedestrian Overpass
 - 2 Prairie Creek Trail
 - 3 Whig Creek (Cyclone) Trail
 - 4 Lock and Dam (Old Post) Trail
 - 5 (Aquatic Center) (Whirlwind) Trail
 - 6 W Main
 - 7 North Knoxville
 - 8 Schoolhouse Connection
 - 9 S El Paso Trail
 - 10 D&R Railroad Trail
 - 11 Elmira Connection
 - A Pedestrian Overpass
 - B PED Underpass (2)
 - C Hawk (2)
 - D Modify Signal (6)
 - E RRFB (8)
 - F Signal RXR Crossing (1)
 - G Trailhead (5)
 - H Pedestrian Bridge Crossing (9)

- Proposed Raise Grant Trails
- Arterial Roadways and Interstate
- Railroad
- Creeks
- Bicycle Facilities
- Existing Sidewalk
- Arkansas Tech University
- Schools
- Medical
- Parks and Recreation
- Industrial
- Shopping



DRAWN BY: SS		SCALE: 2500"=1"	
REVIEWED BY: GN		DATE: 2/24/2023	
SHEET TITLE: OVERVIEW			
PROJECT NO.: 23-007		SHEET NO.: HD	
PROJECT NAME: Raise Grant			
3			
2			
1			XX-XX-XX
NO.	REVISION/SUBMISSIONS		DATE

approx. 12.96 miles of trail construction